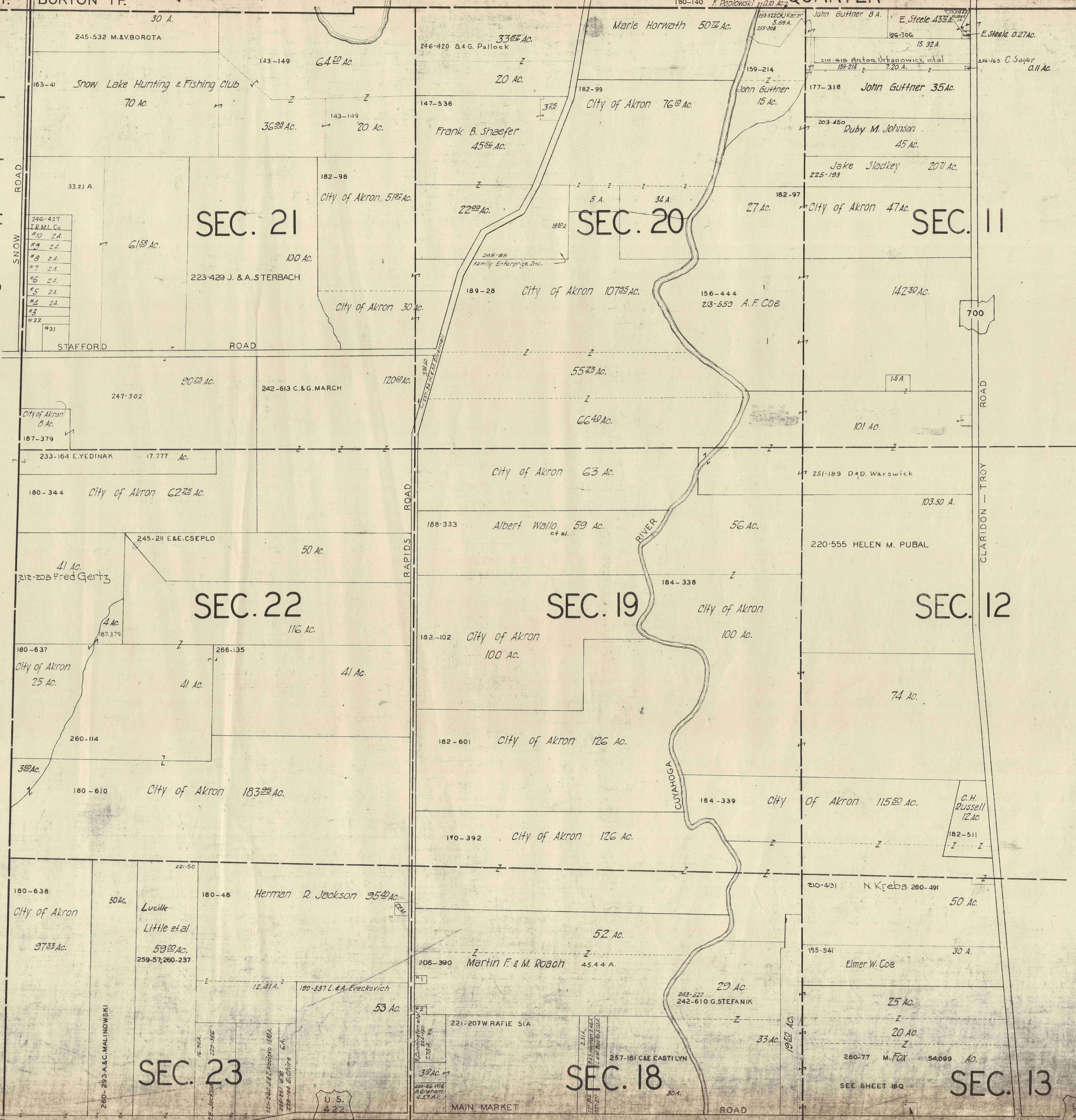


NEWBURY TP. BURTON TP. NORTH-WEST QUARTER TROY TWP. NORTH-WEST QUARTER

- #11 255-480 A. Grootegoed 24.
- #10 255-330 J.R. Delesal
- #9 257-455 M. & S. Kaltronick
- #8 257-500 R. Perk
- #7 255-616 " "
- #6 255-481 A. Grootegoed
- #5
- #4
- #3
- #2 247-487 E & E Blackburn 3A.
- #1 247-486 G & A Ely 378A.

S N O W R I V E R



SCALE 1 IN. = 10 CH.

JAN. 1, 1955

- #1 251-417 M & A Roach O.A.S.A.
- #2 251-416 L & B Roach O.A.S.A.
- #3 265-202 J & H Kangas

MATCH LINE SOUTH-WEST QUARTER

U.S. 422

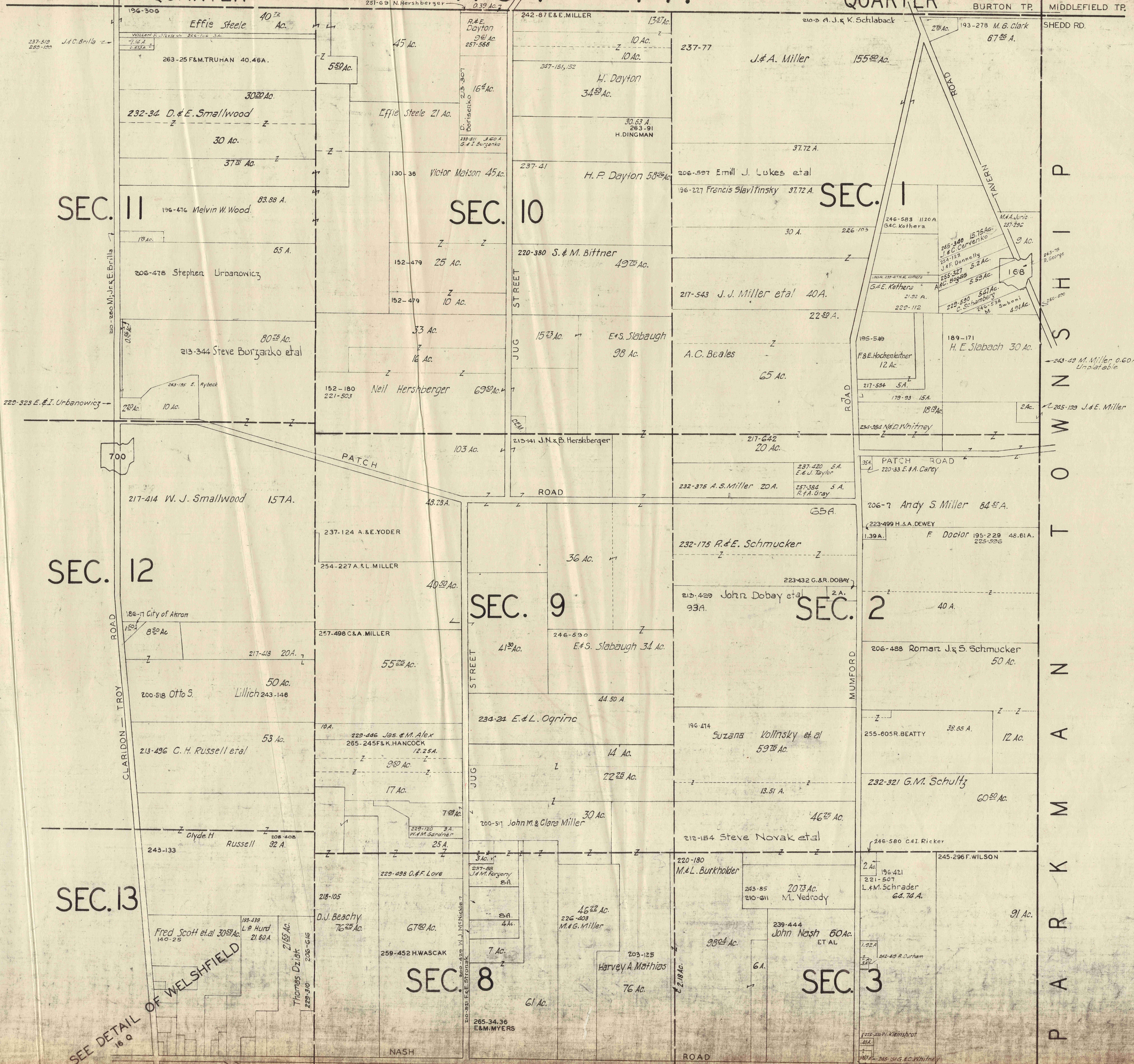
16 N.W.

NORTH-EAST QUARTER

TROY TP.

NORTH-EAST QUARTER

BURTON TP. MIDDLEFIELD TP.



P A R K M A N T O W N S H I P

SCALE 1 in. = 10 ch.

JAN 1, 1955

16 N.E.

SEE DETAIL OF WELSHFIELD 16 a

SOUTH-WEST QUARTER

TROY TP.

SOUTH-WEST QUARTER

NORTH-WEST QUARTER
MATCH LINE

U.S. 422

U.S. 422

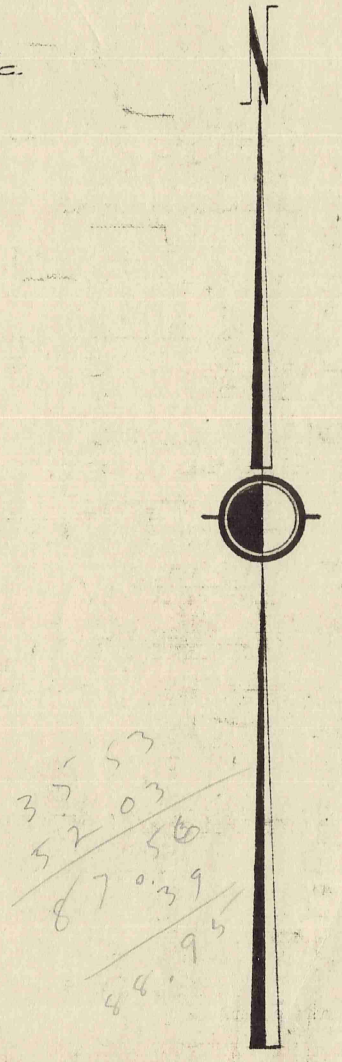
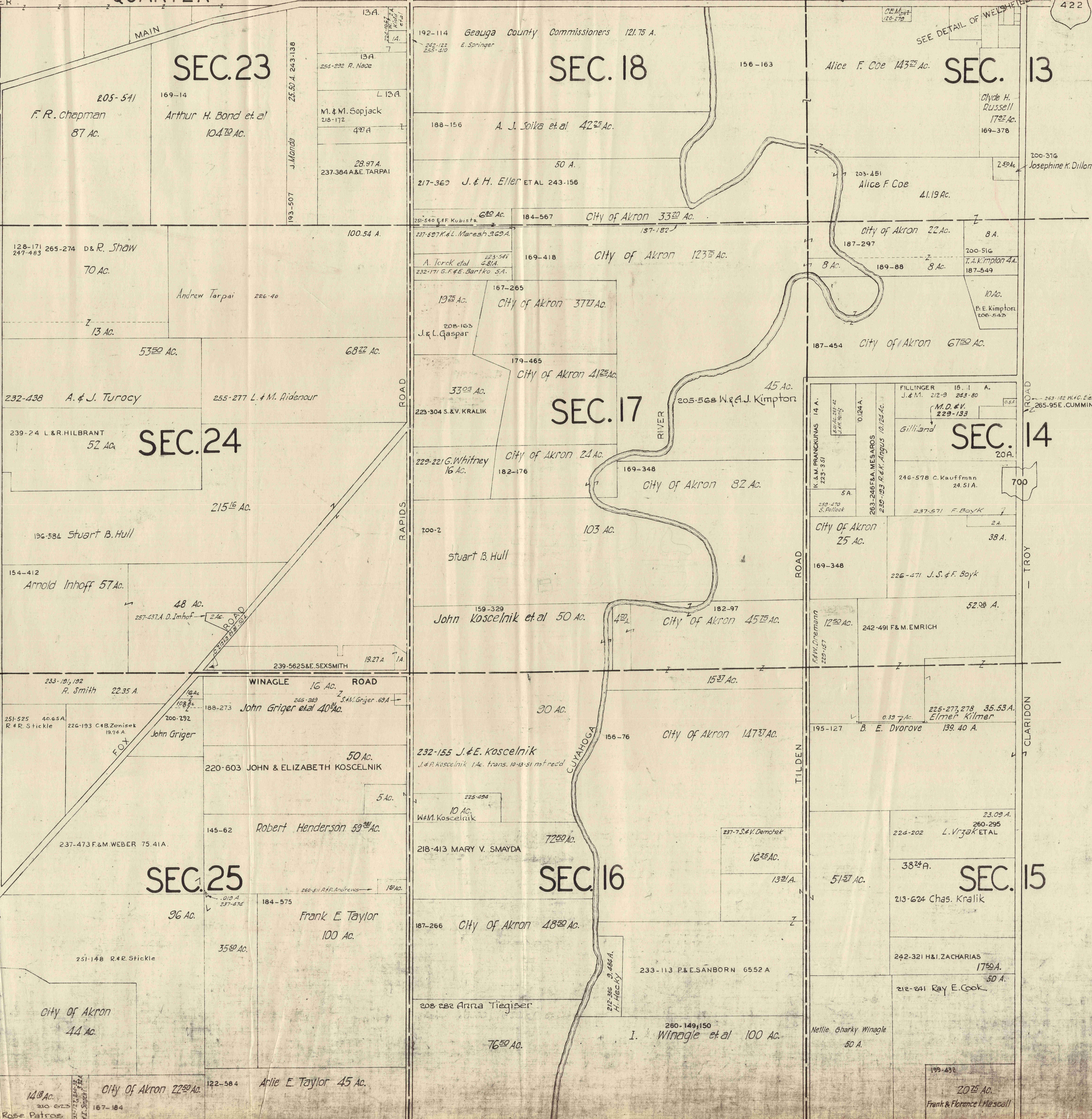
P
O
R
T
A
G
E

S
H
A
W

R
O
A
D

T
R
O
Y

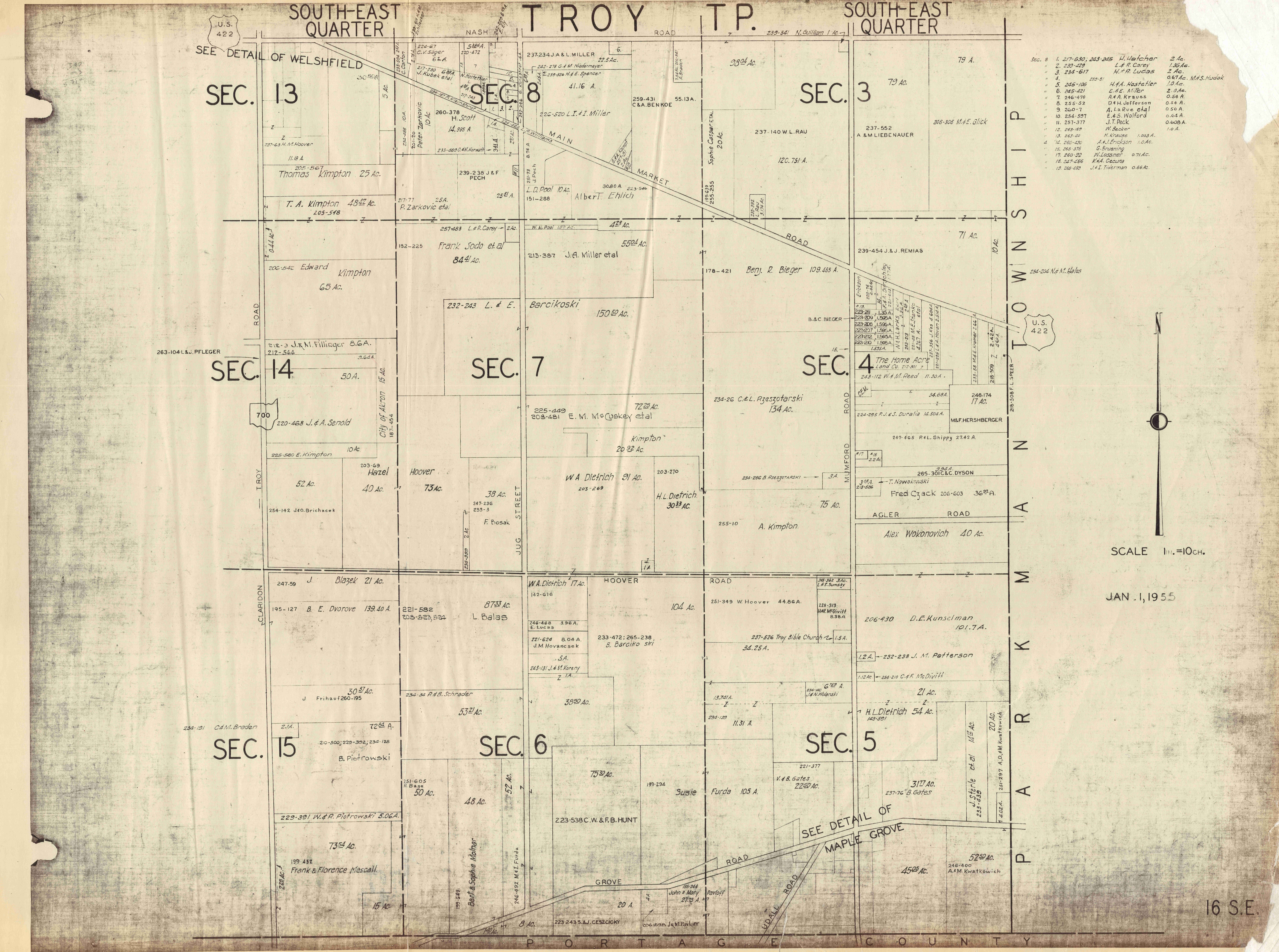
C
O
U
N
T
Y



SCALE 1 in. = 10 ch.

JAN. 1, 1955

16 S.W.



Sec. 8

1.	217-530; 243-245	H. Hatcher	2 Ac.
2.	233-429	L. & R. Carey	1.35 Ac.
3.	234-617	H. & R. Lucas	2 Ac.
4.			0.67 Ac. M. S. Hudak
5.	246-106	H. A. Hastetter	1.0 Ac.
6.	245-421	E. S. E. Miller	2.0 Ac.
7.	246-410	A. A. Krauss	0.54 Ac.
8.	255-52	D. H. Jefferson	0.54 Ac.
9.	260-7	A. LaRue et al	0.50 Ac.
10.	254-597	E. S. Wolford	0.64 Ac.
11.	257-377	J. T. Peck	0.60 Ac.
12.	263-169	W. Becker	1.0 Ac.
13.	263-20	H. Krause	1.003 Ac.
14.	260-430	A. J. Erickson	1.0 Ac.
15.	266-376	G. Brumling	
17.	260-22	N. Lossner	0.71 Ac.
18.	257-486	K. A. Decatur	
19.	266-450	J. I. Tolman	0.66 Ac.

SCALE 1 in. = 10 ch.

JAN. 1, 1955

16 SE.

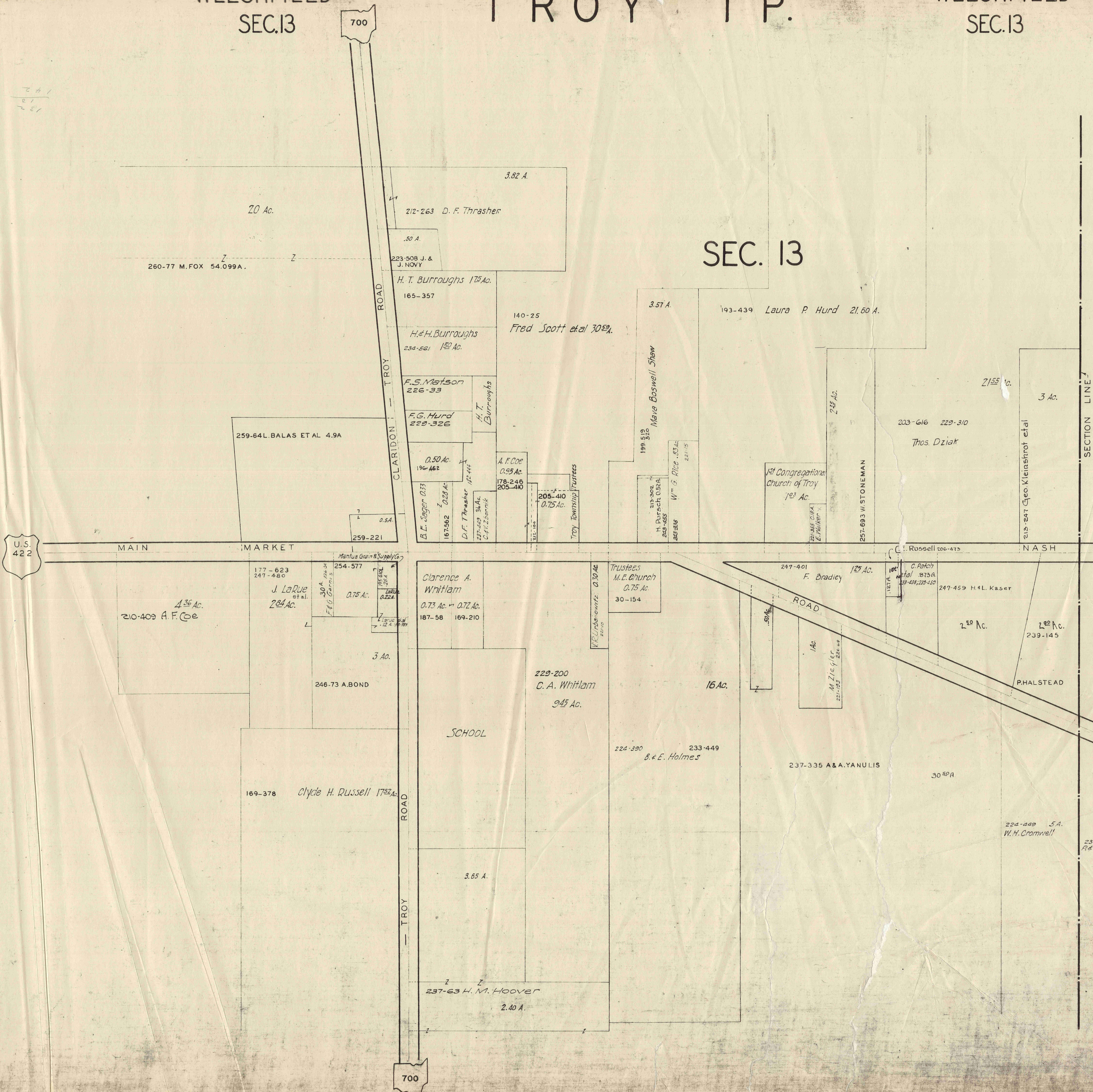
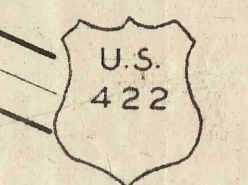
WELSHFIELD
SEC.13

TROY TP.

WELSHFIELD
SEC.13

SEC. 13

SEC. 8



SCALE 1IN.=25CH.=165FT.

JAN. 1, 1950



MAPLE GROVE
SEC. 5

TROY TP.

MAPLE GROVE
SEC. 5

SEC. 6

SEC. 5



SCALE 1 IN. = 2.5 CH. = 165 FT.

JAN, 1955

SECTION LINE 7

ROAD

MUMFORD

199-294
Susie Furda 105 A.

22-90 Ac.
221-377 V&B. GATES

218-18
221-75
11.75 A.
G. & H. Hanna et al

239-479 A. BUCHNER
4.25 AC.

317 AC.

1.40 A.
220-77
N. B. Dietrich

190-509
67-550
E. & I. Lewandowski 5.5(A)

187-104
L. Kletecka
3 AC.

CEMETERY
67-550

1.2 A. John Holman et al
24 1/2 AC.

212-542 F. F. Gasper

2.0 A.
218-18
221-75
G. & H. Hanna et al

K. Banko 9.89 A.

242-543 P & M. STOLAR

450 1/2 AC.

254-130 M. Dorsch

192 AC.

0.26 AC.

195-244 John & Mary Pavloff 27.75 A.

1 AC.
210-357
Anton Votrnický

193-255
247-521
255-597

K. Obdrzalek 24 A.

195-57
213-429
C. A. DYSOHN 6 A.
ET AL

M. Gilson
212-430 1 1/2 AC.

2.50 A.

210-2 J. J. & G. J. Wisner
234-288
M. Opaliko
4.50 A.

2 AC.

189-93
R. F. Wachovec et al 15 AC.

193-255
K. Obdrzalek 4.25 A.

257-341
0.75 AC.
M. Luten

P O R T A G E C O U N T Y